

Image-Pro[®] Premier

Image Analysis Starts Here

QUICK
START
GUIDE

Install Image-Pro Premier

To install *Image-Pro Premier*, insert the product DVD and follow the instructions. Note that *Image-Pro Premier* and *Image-Pro Premier 3D* will not install on operating systems or versions of Windows older than Windows 7 (service pack 1).


Image-Pro Premier requires the Microsoft *.NET framework. If this is not installed on your computer, the application will install it automatically.

Upgrading the Installed Software

There are several ways that you can upgrade the software installed on your computer to the latest *Image-Pro Premier*:

- You may download the *Image-Pro Premier* evaluation software and install it from the Media Cybernetics' website.
- If you have ordered an upgrade from *Image-Pro Plus* 9.0 or *Image-Pro Premier* 9.1, you will receive a DVD that will install the software.

Regardless of how you obtain the *Image-Pro Premier* installer, and regardless of which product and version you are upgrading from, the new Premier can be installed alongside your other software. This allows you to evaluate your new *Image-Pro Premier* for your purposes. When you are done with the older software and completely migrated to the latest *Image-Pro Premier*, then you can uninstall the older software from the **Control Panel**.

 Please make sure that you have closed all other applications before installing *Image-Pro Premier*.

Upgrading your *Image-Pro Premier* 9.1 License

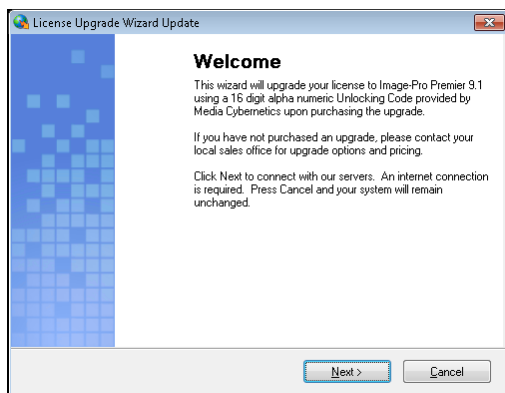
If you are upgrading from *Image-Pro Premier* 9.1, you will also need to upgrade your license to authorize the new version. When you purchased your upgrade, you received an unlocking code; you will need to have this unlocking code handy during the upgrade process.

There are several ways of starting the process of upgrading your license:

- In the *Image-Pro Premier* Start menu folder, open the **Licensing** folder, and click **Licensing Wizard**
- In the *Image-Pro Premier* software, open the **Help** menu by clicking the down arrow next to the **Help** icon, and click **Licensing Wizard**.

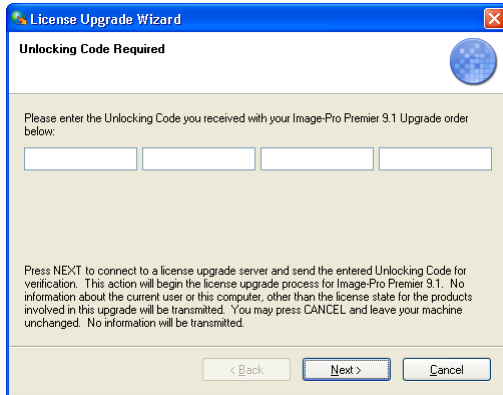
Image-Pro Premier includes a **Licensing Wizard** to step you through the process of upgrading your *Image-Pro Premier* 9.1 license. Note that after the upgrade, the new license will still allow you to run previous versions of *Image-Pro Premier*.

When you invoke the **Licensing Wizard**, you should see the following the first page of the wizard:



1. Click **Next** to continue or **Cancel** to stay with version 9.1.

The next screen asks you to enter your unlocking code:



2. Enter the unlocking code that you received with your *Image-Pro Premier* upgrade order.
3. Click **Next** to continue. The upgrade process will begin without further user input.

You will see an Upgrade Complete message when the process finishes.

You may be asked to restart your computer.

Register Your Image-Pro Premier License

Image-Pro Premier requires either a hard license on a USB key or a soft license obtained on line. Both types of licenses must be registered.

Register your *Image-Pro Premier* license to be eligible to receive special support service, including:

- 90 days of free technical support
- Automatic software updates

USB license holders must register their licenses after installing the software and plugging in the hardware key. If Internet access is not available, please follow the instructions below for PCs without Internet access.

If you have an *Image-Pro Premier* soft license (installed on your machine) your license will be registered automatically when you activate your license. See the Activation instructions below.

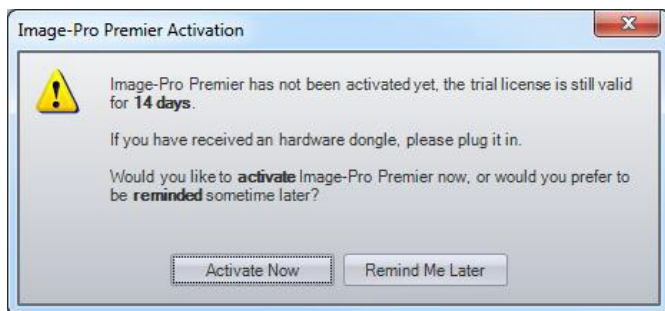
Activate your Image-Pro Premier License

If you purchased an *Image-Pro Premier* USB license, your software will arrive already licensed. Plug in your USB license to start using *Image-Pro Premier*. Be sure to register your license as mentioned above so you can receive 90 days of support and online updates.

If you purchased an *Image-Pro Premier* soft license (to be installed on your machine), before you can use *Image-Pro Premier*, a valid license file must be obtained from the Media Cybernetics Web site. A 14-day trial license is included for evaluation purposes.

If your PC has Internet access and a software license

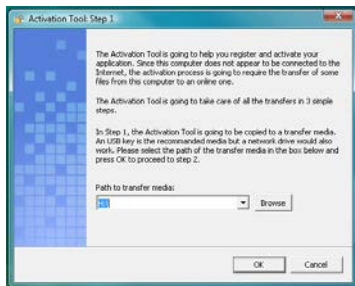
When you first start *Image-Pro Premier*, you will see the following dialog:



1. Click **Activate Now** to activate your license. This will load the activation web page in the built-in web browser.
2. Enter the **Unlocking Code** that was sent with the product, together with standard registration information. Once your information is received, the license file will be installed on your machine automatically.

If your PC does not have Internet access

If you choose **Activate Now**, and your PC is not connected to the internet, you will see *Step 1* of the **Activation** process.



1. Select a path to a removable medium, such as a USB flash memory drive. The software will save your files to this location along with an **Activation** shortcut link.
2. Click **OK**.
3. Take your USB key and your **Unlocking Code** to a machine with Internet access. Once you attach your USB key to the computer, the **Activation Tool** should start automatically. You will see *Step 2* of the activation process.
4. Fill in the information requested in the Product Registration page and press **Submit**.

The image shows a 'Product Registration' form. It includes fields for 'Unlocking Code*' (a 4-digit code with dashes), 'First Name*', 'Last Name*', 'Email Address*', 'Title', 'Company*', 'Address*' (two lines), 'City*', 'State*', 'Postal Code*', 'Country*', and 'Telephone*'. Below these fields is a question: 'How would you categorize your field of work?' with four radio button options: 'Biomedical/Life Science', 'Industrial', 'Military/Government', and 'Energy'. At the bottom is a 'Submit' button.

5. You should see a screen indicating that the activation is successful.
6. Return to your off-line PC to continue the activation process. Once you plug in the USB key, you should see a popup stating that Image-Pro Premier has successfully activated.
7. Click OK. You should now be able to use Image-Pro Premier.

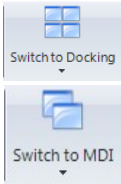
Workspace Quick Tips

File Button – Open, Print & Save



The **File Button** in the top left corner contains commands that operate on the document as a whole, such as Open, Print, and Save.

Switch from Docked to Multiple Document Interface (MDI) Layout



You can switch between the default docked image mode and the traditional MDI mode easily.

These tools are available in the **View** tab as well as in the *Quick Access Toolbar*.

Quick Access Toolbar



The *Quick Access Toolbar* is a convenient location at the top of your application window, where you can put shortcuts to commonly used commands. To add new commands, click the arrow to the right of the toolbar.

Options Buttons

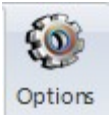
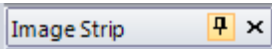


Image-Pro Premier includes **Options** buttons throughout the workspace. Click on these gear buttons to adjust colors, font sizes, and other feature settings.

Hide Dialogs for Extra Space



Open up your workspace by hiding open dialog boxes. Simply click the thumbtack button on the top of each dialog to “hide” it to the left or right side of the application. Hover over the dialog to view and click the thumbtack again to display the dialog.

Capture Images

To view and capture images from your digital camera, you will first need to install the correct capture interface and drivers for your particular camera model. Visit <http://support.mediacy.com> to download Media Cybernetics’ capture interface files. *Image-Pro Premier Offline* users will not see Capture options.

Capture Single Frame Images

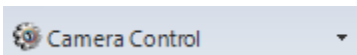


1. Go to the **Camera** group on the **Capture** ribbon:
2. Click the **Live** drop-down arrow and select your camera from the drop-down list.
3. Click the **Live** button to see a live preview of your image.
4. Click **Capture** to capture the image to the *Image-Pro Premier* workspace

Capture Multi-Frame Movies

1. Follow steps 1-3 above.
2. Click **Record** to capture the movie.
3. To **Stream to Disk**, open the **Capture Control** dialog and activate **Stream to Disk** in the Record Movie Options panel, or click the Record drop-down arrow. This option will remain activated until you uncheck the Stream to Disk option.

Adjust Capture Settings



Click the **Camera Control** button in the *Cameras* group to open the **Camera Control** dialog and adjust controls including as binning, movie options, bit-depth, gain, file naming, date/time stamp and file saving options.

Tip: Your most recent capture settings are saved automatically at the end of your session. You can use the Load and Save settings to switch between alternate configurations quickly and easily.

Adjust, Select & Review Images

Three Quick Ways to Zoom Images

- Zoom with your mouse wheel.
- Zoom with the drop down and slide bar in the right corner of the application window.



- Click the **Zoom** button on the Image menu.

Define a Region of Interest (ROI)

1. Go to the *ROI* group on the Select ribbon.
2. Click on the ROI tool you want to use, and draw the ROI in the image.
3. If you want to define more than one ROI in a single image, you can use the Allow Multiple Regions tool.



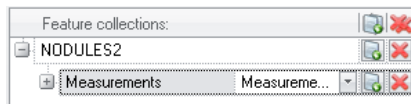
Save and Convert Overlays with the Features Manager



Easily save regions of interest, measurements, annotations and other overlays using the Features Manager tool.

1. Draw a measurement or region of interest.

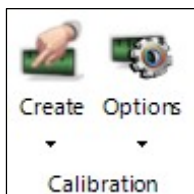
2. Go to the **Select** ribbon and choose the **Features Manager** button. The **Features Manager** dialog will open to the right.
3. Choose to add your measurement or region of interest to a new collection.
4. Choose the **Save** button to save this collection.
5. To convert the overlay, select the dropdown option next to the collection type (ex: Measurements, ROIs, etc.) and change the type. Select the **Set Feature Collection to Image** button to apply this change.



Measure and Quantify

Calibrate

Use the **Calibration** group in the **Capture** ribbon to create and save calibrations.



Click the **Create** drop-down arrow to use these calibration options:



Clicking the **Quick Calibration** button creates a calibration by drawing a reference line on your image.



Clicking the **Auto Calibration** button creates a calibration using the image of a stage micrometer.

Count and Classify Objects

Automatically segment, count and classify objects.

1. Go to the **Count/Size** ribbon.

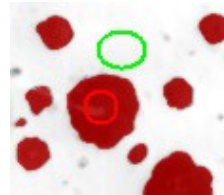


2. For monochrome images, choose **Bright** or **Dark** from the Segment Group to automatically segment objects with bright or dark intensity levels.
3. Choose **Count** to measure the objects.
4. Choose **Split** to separate touching objects.
5. Select the **Excel** button in the data table to export your measurements.

Smart Segmentation

Use **Smart Segmentation** to segment images with colored objects, uneven backgrounds, and textures. To start, go to the **Count/Size** ribbon.

1. Choose **Smart** in the Segment Group. The Smart Segmentation dialog will open to the right. You must draw a reference object and then define your background to start segmenting.
2. Click on the **Select Objects** tool to activate object selection tool. Draw a circle on the object you wish to segment.
3. Click on the **Background** tool to activate the background selection tool. Draw on the background area to activate the segmentation.
4. You can continue to add objects or background to perfect the segmentation.
5. Select **Count** to measure your objects.

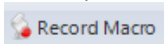


Tip: To select measurements, choose the **Types** button in the Count/Size or Measure ribbon to open the measurement selection tool. All available measurements are displayed on the left. Double click on a measurement to add it to your list on the right.

Automate Your Work

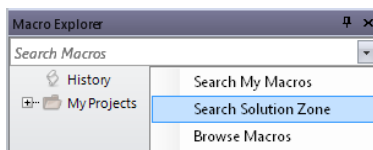
Easily Record Tasks with Macros

Automate repetitive tasks with **Macro Recording** tools.



1. Go to the *Macros* group on the **Automate** ribbon.
2. Choose the **Record Macro** button.
3. Give your macro a name and walk through your tasks.
4. Hit the Stop Recording button. You can now walk through your macro.

Download Applications and Macros from the Solutions Zone

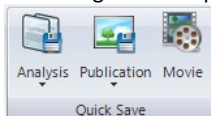


Download macros and applications created by Media Cybernetics and other *Image-Pro Premier* users. Open the **Macro Explorer** in the **Automate** ribbon and choose **Search the Solutions Zone**.

Save & Report

Quick Save Tools

Save images in multiple formats with easy **Quick Save** tools.



1. Go to the **Quick Save** group
2. Choose **Analysis** (.TIF), **Publication** (.JPG). or **Movie** (.AVI).

Export Images with Overlays

The **Export** group in the **Share** ribbon includes tools to export images and overlays.



Snap

Use **Snap** to create a new image with measurement and annotation overlays burned in.



View

Use **View** to save an image with overlays burned in, at your current magnification. This tool is ideal for publishing a feature of interest, rather than the entire image.

Create Reports

Image-Pro Premier includes default report templates for creating reports in *Adobe® PDF*, *Microsoft Excel®*, and *Microsoft Word®*.

1. Go to the **Report** group on the **Share** tab.



2. Use the **Images** drop-down to choose your image(s).
3. Use the **Template** drop-down to select your report template.
4. Use **Edit Report** or **Edit Template** to make changes to the content and layout of your report,
5. Click **Preview Report** to preview your report.
6. From the **Report Ribbon**, click **Save As** to save as PDF or other file format.

Image-Pro Premier Support & Training Tools

Video Tutorials

Access educational video tutorials designed to teach you how to use *Image-Pro Premier*. View the videos in your Image-Pro Premier Welcome Screen and visit www.mediacy.com for additional tutorials.

In Product Help and PDF Users Guide

Click on the “?” button in the top right of your application to access the In-Product Help files. Select **F1** while hovering over a button to open the related help files. The “?” button also includes a link to the Image-Pro Premier Users Guide PDF.

Download Macros and Applications from the Solutions Zone

Download and share applications and macros specific to your workflow from the Media Cybernetics Solutions Zone website. Visit www.mediacy.com

Media Cybernetics Technical Support

Visit our Support Site or contact our Technical Support Team if you have specific questions about supported drivers, software installation or other technical needs. Visit <http://support.mediacy.com>

Media Cybernetics

(301) 495-3305 | FAX (301) 495-5964
www.mediacy.com

www.mediacy.com